



## Jill Wilson

**Home province:** Coromandel, North Island

**Contact email address:** wyuna@xtra.co.nz

**Contact phone number:** 021 295 0770

**Do you travel?** Jill is prepared to travel anywhere in New Zealand and would possibly consider Australia (once our world is back to normal).

### Techniques offered:

Canvaswork, Blackwork on felt, Wessex, Cornpad, Box Construction, Magic Cubes, Crazy Patchwork and Appliqué with Embellishment using a mixture of wool felt, patchwork cotton, beads and numerous stitch types.

### Workshops offered:

*Photographic samples are available on the following pages...*

p2 • Jill's most recent focus has been Magic Cubes.

These are a set of 8 cubes with 48 small squares that are stitched either in counted work or surface stitching on even weave linen.

p3 Some other workshops taught by Jill include:

- Canvaswork
- Blackwork on felt
- Appliqué with Embellishment using a mixture of wool felt, patchwork cotton, beads and numerous stitch types
- Box Construction

p4 • Crazy Patchwork

- Wessex work
- Cornpads (no image)

### About Jill:

Jill's embroidery journey started in the mid 80s, completing mostly cross stitch patterns. She joined an evening group of embroiderers in Te Awamutu in 1993, which later became the Waipa Embroiderers' Guild and she has been a member of Coromandel Guild since 2005. Jill has participated in many workshops over the years at local guilds, weekend retreats and Conferences, learning a large range of techniques.

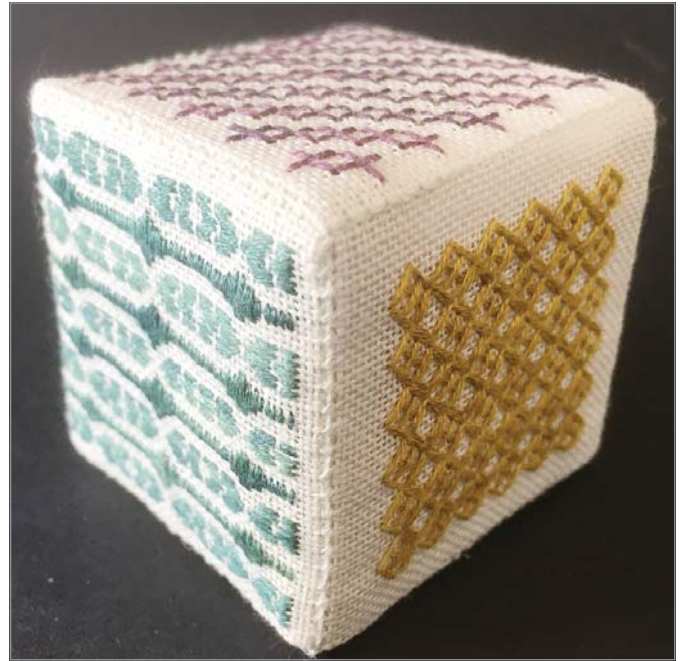
Since moving to Coromandel she was encouraged to tutor locally, and has since tutored at other guilds, the regional retreat at Tui Ridge, and The Great Escape.

Jill enjoys both surface stitching and some counted embroidery. She particularly enjoys the use of colour and pattern, and encouraging students to try something new.



# ANZEG TUTOR'S REGISTER

© All rights reserved on images and classes by Jill Wilson.



CUBES stitched in counted work.

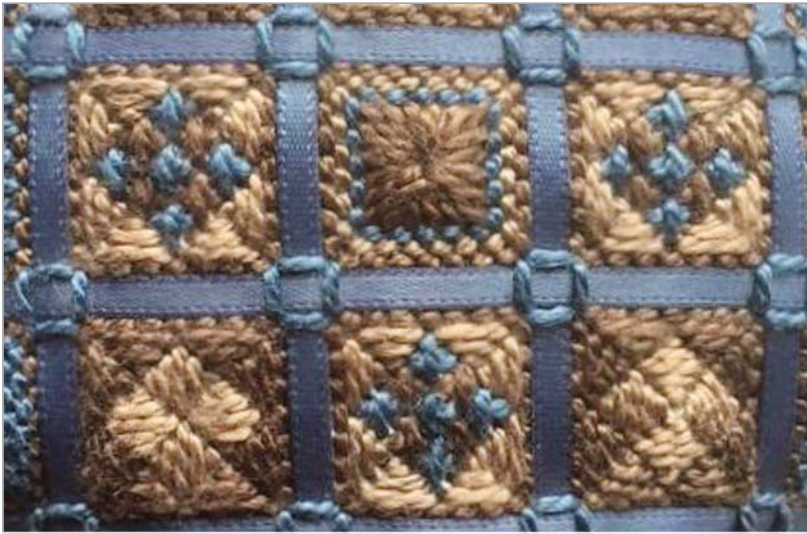


MAGIC CUBES 8x cubes with 48 squares stitched in counted work and constructed so that they fold on themselves.

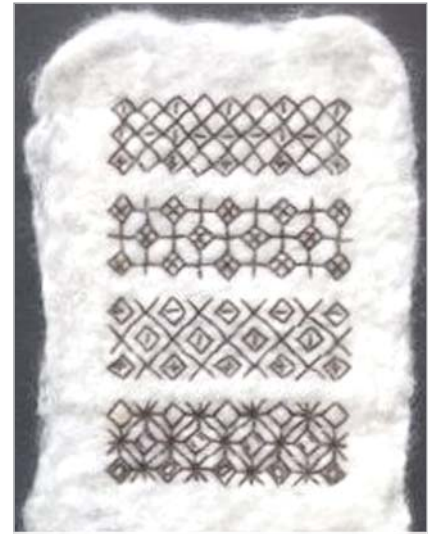


# ANZEG TUTOR'S REGISTER

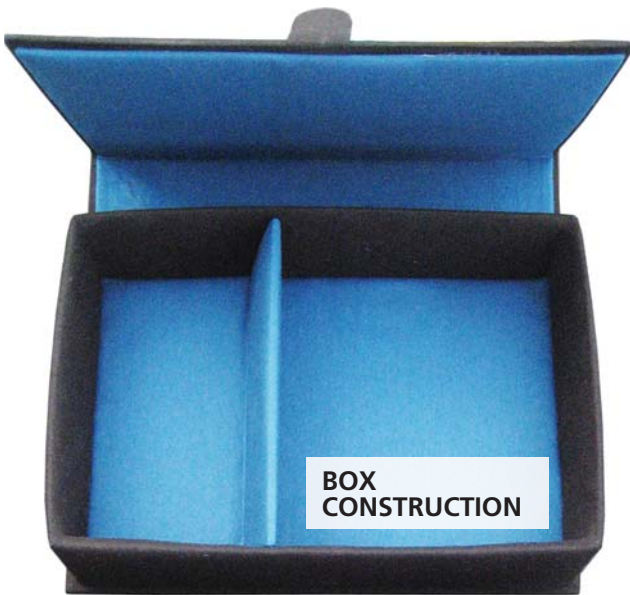
© All rights reserved on images and classes by Jill Wilson.



CANVASWORK



BLACKWORK ON FELT



BOX  
CONSTRUCTION



APPLIQUÉ WITH EMBELLISHMENT 1



APPLIQUÉ WITH EMBELLISHMENT  
techniques also form  
the lid for the constructed box.



# ANZEG TUTOR'S REGISTER

© All rights reserved on images and classes by Jill Wilson.



**CRAZY PATCHWORK**



**WESSEX NEEDLEHOLDER**



**WESSEX POUCH**